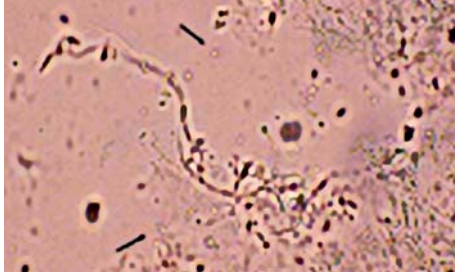


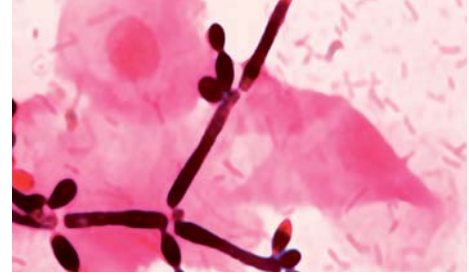
Sprosspilze und filamentöse Pilze

1. *Candida* spp.

KOH-Präparat *C. albicans*

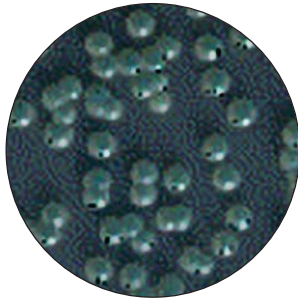


Gram-Präparat *C. albicans*

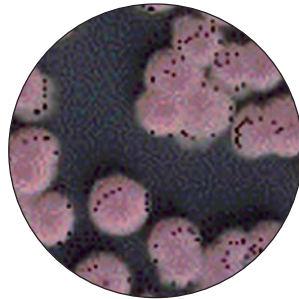


Candida spp. auf Chromagar

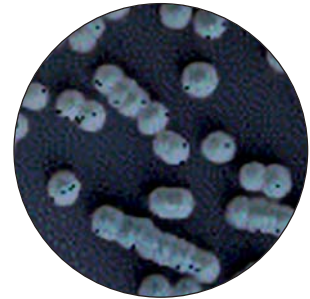
C. albicans



C. krusei

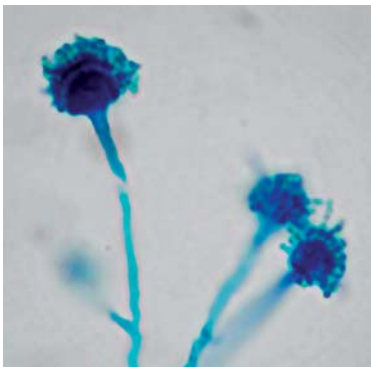


C. tropicalis



2. Schimmelpilze

A. fumigatus



Kultur *A. fumigatus*

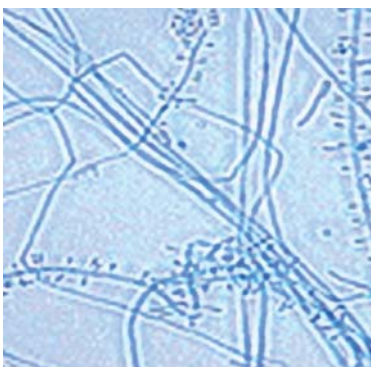


Kultur *A. niger*



3. Dermatophyten

T. rubrum



Kulturoberseite



Kulturunterseite

